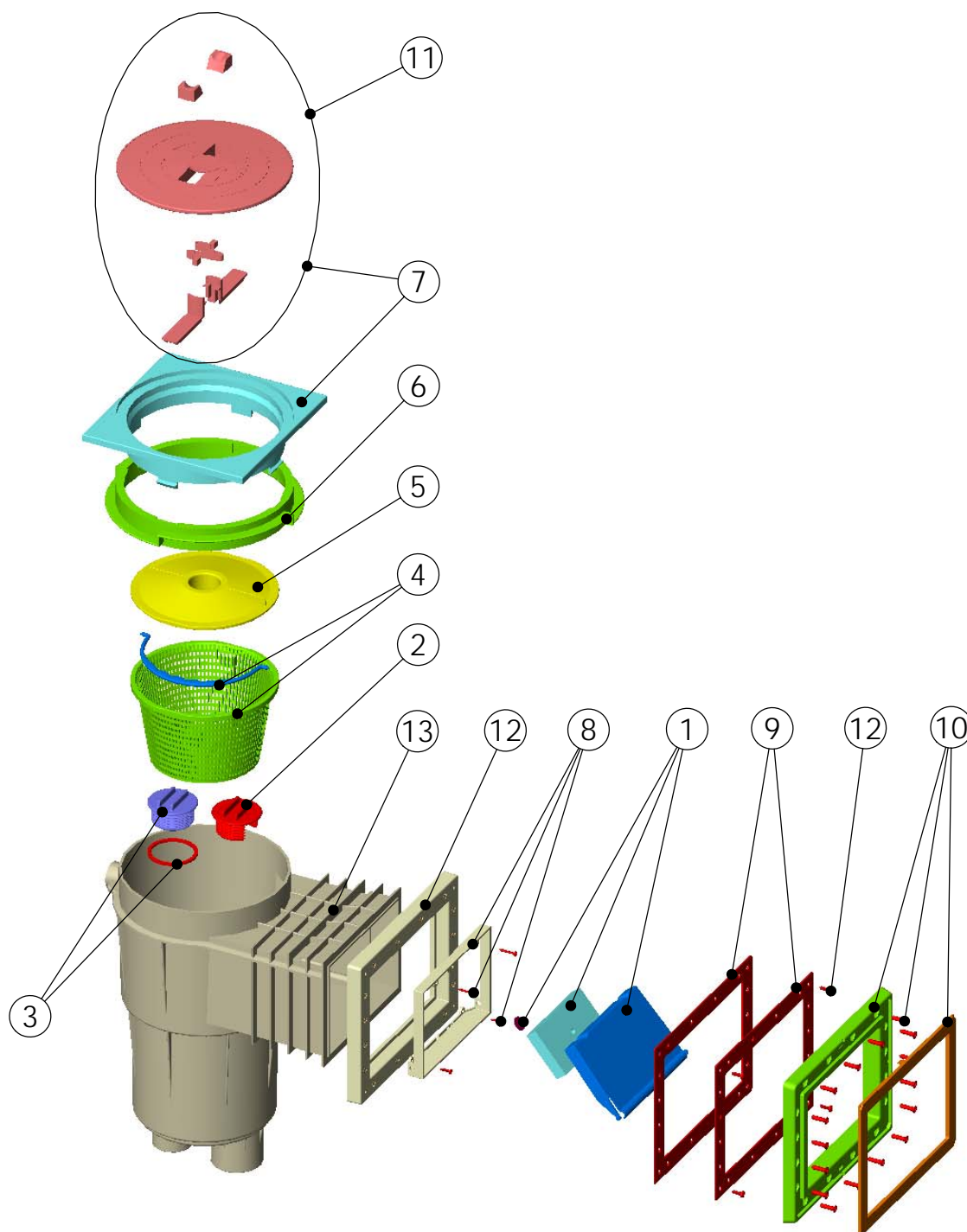


CÓDIGO: **11309**
 DENOMINACIÓN: **SKIMMER 17,5L PP B.STD T.CUADRADA**



| POS. | CODIGO | DENOMINACION | POS. | CODIGO | DENOMINACION |
|------|------------|-----------------------------|------|------------|--------------------------|
| 1 | 4402010501 | COMPUERTA SKIMMER CON CLIP | 8 | 4402010508 | MARCO COMPUERTA SKIMMER |
| 2 | 4402010502 | TAPON REGULADOR | 9 | 4402010307 | JUNTA SKIMMER PEQUEÑA |
| 3 | 4402010503 | TAPON CON JUNTA | 10 | 4402010308 | MARCO PEQUEÑO SKIMMER |
| 4 | 4402010504 | CESTO SKIMMER 17,5 LTS. | 11 | 4402010509 | TAPA SKIMMER |
| 5 | 4402010505 | TAPA CESTO SKIMMER | 12 | 4402011113 | MARCO ADAPTADOR BOCA |
| 6 | 4402010506 | ANILLO DISTANCIADOR SKIMMER | 13 | 05280R0101 | CUERPO SKIMMER 17,5 lts. |
| 7 | 4402010510 | MARCO CUADRADO Y TAPA | | | |

ENGLISH

| POS. | CODE | DESCRIPTION | POS. | CODE | DESCRIPTION |
|------|------------|----------------------------|------|------------|--------------------------------------|
| 1 | 4402010501 | SKIMMER FLAP | 8 | 4402010508 | FLAP FRAME |
| 2 | 4402010502 | REGULATING PLUG | 9 | 4402010307 | SMALL SKIMMER GASKETS FOR LINER POOL |
| 3 | 4402010503 | BLANKING PLUG AND 'O' RING | 10 | 4402010308 | SMALL SKIMMER FRAME |
| 4 | 4402010504 | BASKET 17,5 LITRES | 11 | 4402010509 | SKIMMER LID |
| 5 | 4402010505 | VACUUM PLATE | 12 | 4402011113 | ADAPTOR FRAME |
| 6 | 4402010506 | COLLAR EXTENSION RING | 13 | 05280R0101 | SKIMMER BODY |
| 7 | 4402010510 | SQUARE RIM AND LID | | | |

FRANÇAIS

| POS. | CODE | DESCRIPTION | POS. | CODE | DESCRIPTION |
|------|------------|----------------------------|------|------------|---------------------------------------|
| 1 | 4402010501 | VOLET DE SKIMMER | 8 | 4402010508 | CADRE VOLET SKIMMER |
| 2 | 4402010502 | BOUCHON REGULATEUR | 9 | 4402010307 | JOINT SKIM PETIT MODELE PISCINE LINER |
| 3 | 4402010503 | BOUCHON SKIMMER AVEC JOINT | 10 | 4402010308 | BRIDE ET CACHE VIS KIT LINER |
| 4 | 4402010504 | PANIER SKIMMER 17,5 LTS | 11 | 4402010509 | COUVERCLE ROND DE SKIMMER |
| 5 | 4402010505 | COUVERCLE PANIER SKIMMER | 12 | 4402011113 | CADRE ADAPTATEUR BOUCHE |
| 6 | 4402010506 | CADRE REHAUSSE COUVERCLE | 13 | 05280R0101 | CORPS DU SKIMMER |
| 7 | 4402010510 | CADRE ET COUVERCLE ROND | | | |

ITALIANO

| POS. | CODE | DESCRIPTION | POS. | CODE | DESCRIPTION |
|------|------------|--------------------------------|------|------------|-----------------------------------|
| 1 | 4402010501 | BATTENTE SKIMMER CON CLIP | 8 | 4402010508 | CORNICE BATTENTE SKIMMER |
| 2 | 4402010502 | TAPPO DI REGOLAZIONE | 9 | 4402010307 | GUARNIZIONE PER SKIMMER BASE P.F. |
| 3 | 4402010503 | TAPPO CON GUARNIZIONE | 10 | 4402010308 | CORNICE PICCOLA SKIMMER |
| 4 | 4402010504 | CESTELLO SKIMMER DA 17,5 LITRI | 11 | 4402010509 | COPERCHIO SKIMMER |
| 5 | 4402010505 | COPERCHIO CESTELLO SKIMMER | 12 | 4402011113 | FLANGIA ADATTATORE BOCA |
| 6 | 4402010506 | ANELLO DISTANZIATORE SKIMMER | 13 | 05280R0101 | CORPO SKIMMER |
| 7 | 4402010510 | FLANGIA QUADRATA E COPERCHIO | | | |

DEUTSCH

| POS. | CODE | DESCRIPTION | POS. | CODE | DESCRIPTION |
|------|------------|-------------------------------|------|------------|----------------------------------|
| 1 | 4402010501 | SKIMMERKLAPPE MIT CLIP | 8 | 4402010508 | RAHMEN FÜR SKIMMERKLAPPE |
| 2 | 4402010502 | REGULIERKAPPE | 9 | 4402010307 | DICHTUNG FÜR SKIMMER KLEIN FOLIE |
| 3 | 4402010503 | VERSCHLUSSKAPPE | 10 | 4402010308 | FLANSCHRAHMENSATZ |
| 4 | 4402010504 | SKIMMERKORB | 11 | 4402010509 | SKIMMERDECKEL |
| 5 | 4402010505 | ABSAUGDECKEL | 12 | 4402011113 | RAHMEN FÜR VERLÄNGERUNG |
| 6 | 4402010506 | ABSTANDSRING | 13 | 05280R0101 | SKIMMERKÖRPER |
| 7 | 4402010510 | SKIMMERDECKELSATZ QUADRATISCH | | | |

PORTUGUÊS

| POS. | CODE | DESCRIPTION | POS. | CODE | DESCRIPTION |
|------|------------|---------------------------|------|------------|---------------------------|
| 1 | 4402010501 | COMPORTA SKIMMER CLIP | 8 | 4402010508 | CAIXILHO COMPORTA SKIMMER |
| 2 | 4402010502 | TAMPA REGULADORA | 9 | 4402010307 | JUNTA PEQUENA DE SKIMMER |
| 3 | 4402010503 | TAMPA COM JUNTA | 10 | 4402010308 | ARO PEQUENO SKIMMER |
| 4 | 4402010504 | CESTO SKIMMER 17,5 LTS | 11 | 4402010509 | TAMPA SKIMMER |
| 5 | 4402010505 | TAMPA CESTO SKIMMER | 12 | 4402011113 | CAIXILHO ADAPTADOR BOCA |
| 6 | 4402010506 | ANEL DISTANCIADOR SKIMMER | 13 | 05280R0101 | CUERPO SKIMMER |
| 7 | 4402010510 | ARO QUADRADO E TAMPA | | | |